

From the Mayor...



While our relatively mild winter is not technically over, I always feel a sense of relief when March arrives. But before we welcome a new season, I would like to provide you with a final look at the highlights of 2014, which were reviewed during my recent State of the Village address. I think you will be pleased with the village's sound financial condition, exciting development activity, expanding communications, focused emergency management efforts and more. You'll find highlights from the State of the Village in this edition of *Neighbors*, or watch the actual presentation at villageoflisle.org or on the village's Cable TV Channel 10 (Comcast) or 99 (U-verse).

One of the things I am most excited about is the renewed economic development related activity in the downtown. After years of starts and recession-induced delays, it looks like we will finally see a quality development on the old village hall site. Marquette received preliminary approval to build 201 upscale transit-oriented apartments and 15,000 square feet of retail/restaurant space on the site. New residential developments such as Arbor Trails and Avant at the Arboretum have been extremely successful, which reflects the public's strong interest in new housing options in Lisle. In addition, after the Joint Review Board unanimously supported the proposed Downtown TIF, the village board will make a final determination regarding the TIF during an upcoming board meeting.

As March begins, we think of springtime, which to me, means "clean time." The village is ready to help you—both indoors and out. Our popular free branch pickup program begins in April, plenty of time to make a sweep of the yard. The RxBox collection box located at the police department helps you responsibly dispose of unwanted or expired pet and people medications. And two popular recycling programs free you from unwanted clutter. Sustainable Saturday, which accepts a wide variety of items, is scheduled for March 21 at Benedictine University from 9am–12pm. And I am pleased to report the village's monthly electronic recycling collection returns on the third Saturday of each month from 9am–11am at 4930 Lincoln Ave. (Rte. 53). Details about both these and other sustainable programs can be found on the village's website, villageoflisle.org, choose Services, Recycling.

As the weather improves, I look forward to seeing more of you out and about in the community, enjoying springtime in Lisle.

Take care.

Mayor Joe Broda

State of the Village review

On Thurs., Jan. 22, Mayor Broda presented the 2015 State of the Village address during a Lisle Area Chamber Luncheon at the Hilton Lisle hotel. The entire State of the Village may be accessed on the web, villageoflisle.org, on the village's Cable Channel 10 (Comcast customers) or on Channel 99 (U-verse customers). Following are highlights from the address.

Financial

Mayor Broda was pleased to relay that village finances remained steady. Lisle maintains a high Aa2 bond rating (Moody's) and low debt (\$4.5 million). The village continues to be one of the few DuPage County communities that impose limited fees and taxes. For example, Lisle does not have a real estate transfer tax, a vehicle sticker fee, a water tax, a special food/beverage tax or a locally imposed fuel tax. The village's portion of the property taxes, 6% or \$4.6 million, primarily funds police services. Other sources of revenue



The village board gave preliminary approval to Marquette investments, LLC to develop the old village hall site.

include sales tax, state income tax, telecommunications tax and building permit fees, which provide a combined total of \$8,700,745. The village was awarded approximately

\$4.1 million in grant funds, which supplement revenue and facilitate a variety of projects. For the eleventh consecutive year, the village has been awarded a Certificate of Achievement for Excellence in Financial Reporting, reflecting a commitment to transparency in government.

Development update

The village board provided preliminary approval to Marquette Investments, LLC to build a mixed-use development on the old village hall site in Downtown Lisle. The project will feature 201 upscale apartments and 15,000 sq. ft. of retail/restaurant space. Other new developments include Marketplace Plaza, a 6,600 sq. ft. strip mall (Warrenville and Rte. 53) anchored by Dunkin Donuts; Arbor Place, an 81-unit affordable senior living development (Ogden Ave and Karns Rd.); a newly constructed

5,300 sq. ft. Rayme's restaurant which doubled in size and the soon to be constructed new Yerbabuena restaurant.

Arbor Trails, the 162 residential subdivision (Maple Ave. and Benedictine Pkwy.), is 75% complete, with 122 permits issued to date. Upscale apartment complex Avant at the Arboretum with 224 units (east Warrenville Rd.) is 72% leased. The popularity of these new housing options reflects that people value Lisle as a great place to live. Overall, building permit fees increased from \$545,000 in 2013 to \$953,361 in 2014.

On Feb. 2, the village board conducted a public hearing to consider a Downtown Redevelopment Area TIF. A market analysis study was completed by BDI/Hitchcock Design Group to determine what types of businesses are feasible for the downtown and Ogden Avenue Corridor. New Economic Development Coordinator Pete Kelly is focusing his efforts on attracting new businesses to the community.

Communications

The village is expanding its communication channels to reach people using their preferred method of communication. Channels



The Village of Lisle is one of only 66 communities in Illinois that met the National Weather Service guidelines for emergency preparedness.

include: a new, mobile-compatible website, social media, E-notify, videos, cable TV (new TV screen installed in the train station), community publications, a new electronic community sign, media releases, direct mail and more. Seasonal promotions showcase Lisle businesses and engage the public on social media. Many groups now promote their events on the new electronic sign. Quality videos enjoy thousands of views on YouTube.

Emergency management

The village's dedicated efforts to increase the number of CodeRED subscribers has resulted in 1,252 new community notification subscribers and 931 Weather Warning subscribers in 2014. The new Smart 911 service allows people to submit specific household information to a database (medical

conditions, disabled residents, pets, etc.) which will help responders arrive at homes better prepared to deal with emergencies. Due to its widespread efforts to better prepare the community for future emergencies, the village was awarded the Storm Ready designation from the National Weather Service. Only 66 other Illinois communities have met program guidelines.



The village continues to offer free leaf and branch pickup to residents.

Public works

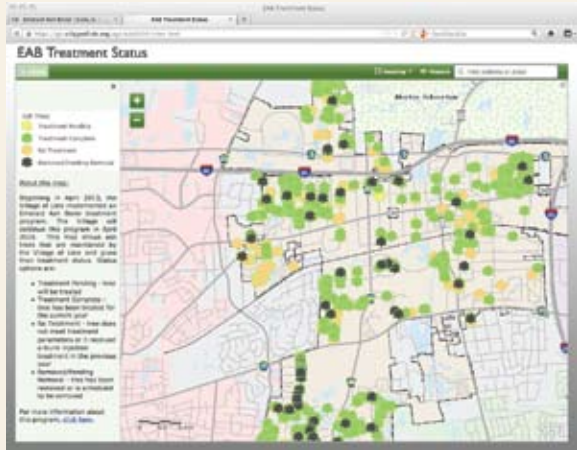
The village continues to offer popular free programs to residents, including leaf and branch pickup. Snow and ice removal continue to generate compliments and help keep the public safe. Nearly 1,700 trees were affected by the emerald



Arbor Trails, the 162 residential subdivision (Maple Ave. and Benedictine Pkwy.), is 75% complete.



A new electronic community sign is just one of many ways the Village of Lisle is expanding communications channels.



The Village of Lisle has an interactive map tracking the treatment and removal of trees affected by the emerald ash borer. The site has information about other pest containment projects as well.

ash borer. To date, 598 trees have been treated and 167 were removed. The village is accelerating its efforts to remove the remaining 926 diseased trees and plant new disease-resistant trees. An interactive web map tracks the program's progress.

Police

The police department was reorganized to operate more efficiently and improve service. In

addition, the public can now submit a variety of requests via the village's website including vacation watch, lost property, overnight parking and missing pets. Attention was focused on reducing heroin and other drug related incidents. D.A.R.E. officers work in schools; officers participate in Department of Justice Drug Enforcement Group investigations; trained officers have used NARCAN to reverse heroin overdoses in three cases. Community education

efforts continue throughout the year and include working with seniors, the homeless, students and more. The new Volunteers 4 Lisle Program now has seven volunteers who have dedicated 2,162 hours to the village. Activities included providing public safety education, assisting with community events, creating a weather app alert and obtaining radio equipment to use in communications. Volunteers help expand services and tap local talent.



Flood mitigation

The village was awarded several flood related grants including a \$2.9



Members from the Eyes to the Skies Committee accept the 2015 Community Spirit Award from Mayor Broda (left).

million FEMA grant, a \$600,000 Community Development Block Grant/Disaster Recovery and a DuPage County Grant (amount to be determined). These funds will be used to acquire/demolish or elevate flood damaged homes. Focused efforts to educate/prevent future disasters helped the village increase its CRS rate to Class 5, providing \$67,000 in annual flood insurance premium savings to residents.

Community partnerships

Mayor Broda recognized some of the many community organizations that have partnered with the village for the good of the community, including the Chamber, Morton Arboretum, Benedictine University, DuPage County, local schools and others.

Community Spirit Award

Finally, Mayor Broda announced that the Eyes to the Skies Committee was the recipient of the 2015 Community Spirit Award for efforts to rejuvenate and manage one of Lisle's signature events, the popular Eyes to the Skies Hot Air Balloon Festival, which will celebrate its 33rd season this summer.

Special events

The new Special Events Grant Committee has approved multiple grants to significantly increase current events and attract new events into Lisle. Volunteer Guide Barb Plichta has conducted tours of PrairieWalk Pond throughout the summer, while Library storytimes attracted tots to Dragonfly Landing.



Library storytimes brought many to Dragonfly Landing over the summer.



FEMA and other grants help community rebuild after the April 2013 flood.